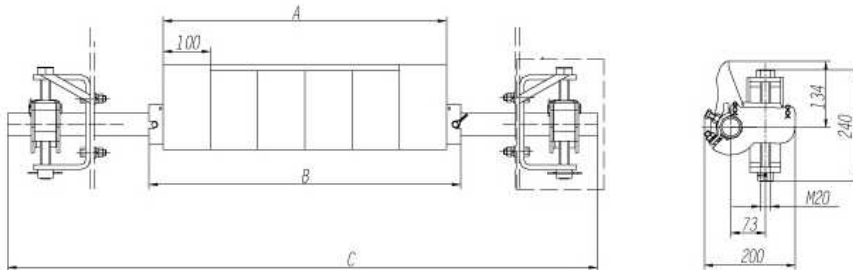


## ● HSC03-XXXX(E2X)

### >> Product Assembly Drawing



### >> Product Specification

TYPE	BELT WIDTH (mm)	BLADE WIDTH (mm)	BLADE QTY (T)	BLADE QTY (PU)	MAIN FRAME B (mm)	SUBFRAME C φ 48x6(mm)
HSC03-0650(E2X)	650	650	4	2	700	1450
HSC03-0800(E2X)	800	800	6	2	850	1600
HSC03-1000(E2X)	1000	1000	8	2	1050	1800
HSC03-1200(E2X)	1200	1200	10	2	1250	2000
HSC03-1400(E2X)	1400	1400	12	2	1450	2300
HSC03-1600(E2X)	1600	1600	14	2	1650	2500
HSC03-1800(E2X)	1800	1800	16	2	1850	2700
HSC03-2000(E2X)	2000	2000	18	2	2050	2900
HSC03-2200(E2X)	2200	2200	20	2	2250	3100

Remarks: Bracket X represents the suitable condition for the product, "C" cold resistance, "H" heat resistance, "U" Ultra violet resistance. "\*" NO special indication